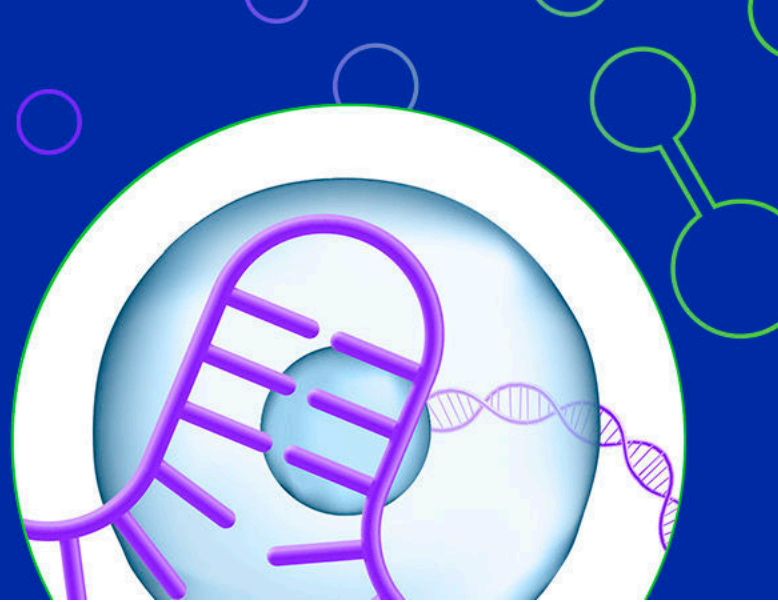


## CRISPR Guide Enrichment Kit

# Maximized guide detection. Maximized discovery.



Our single-cell CRISPR Guide Enrichment Kit drives your high-throughput screens. Our high-throughput guide detection technology is designed to work with CROP-style vectors to provide a higher percentage of cells with a guide detected.

### Extend your capabilities

To maximize guide detection, we've modified our existing Single Cell RNA Sequencing Kit to include CROP-seq guide specific priming during reverse transcription, as well as PCR enrichment in the final step of library preparation. Additionally you can expand your throughput with our Extended Throughput kits. Whether you are using a Cas9 vector or not, you can choose a kit that fits your experimental needs. Scale up your throughput with our Extended Throughput Kit, which enables processing of up to 500,000 cells per run with our streamlined, instrument-free workflow.

### Highlights

#### Superior Sensitivity

>90% of single cells assigned with a CRISPR guide

#### Maximum Scalability

Expand output up to 500,000 cells with our Extended Throughput Kit

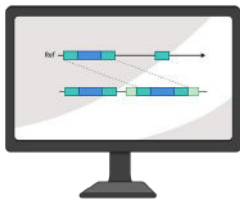
#### Customizable Library Prep

Capture your specific CROP-seq guide using our custom RT design protocol

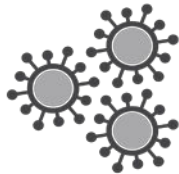
#### Flexible Sample Multiplexing

Designed with the ability to process up to 96 samples per run

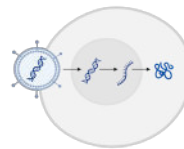
Design CRISPR Library ▶



Assemble Lentivirus ▶



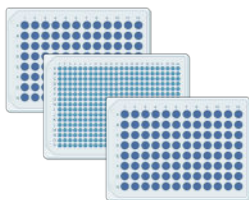
Cell Transduction ▶



Select Cells ▶



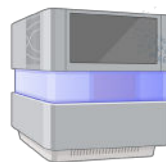
ScaleBio scRNA workflow ▶



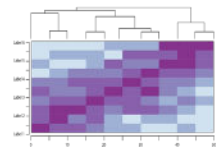
CRISPR Guide PCR ▶



Sequencing ▶



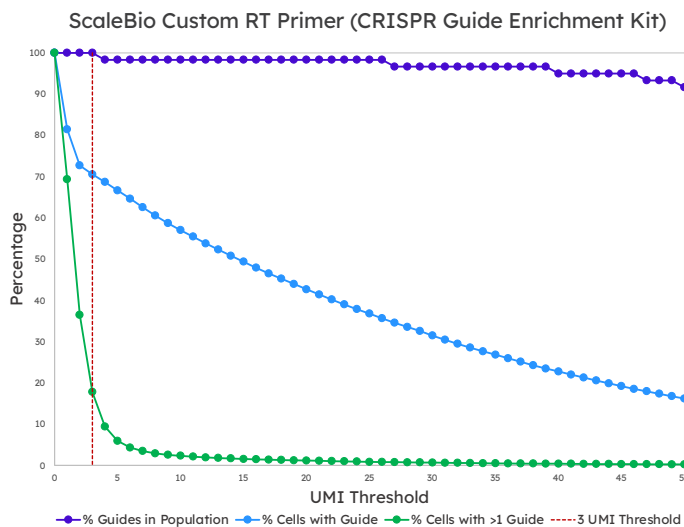
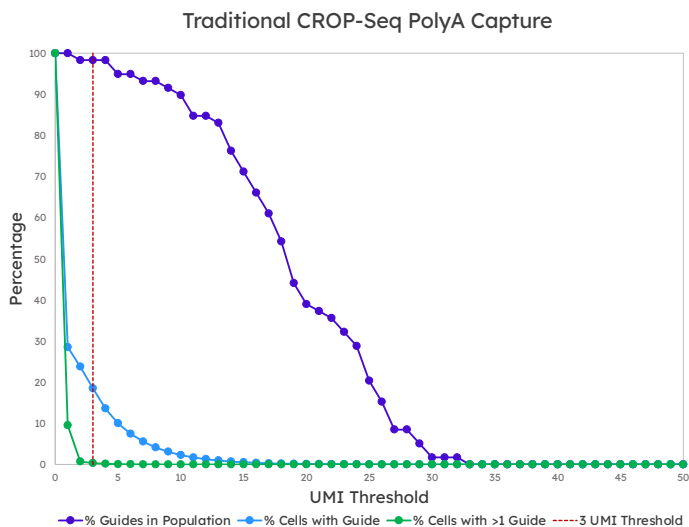
CRISPR Pipeline ▶



Human A375 cells were used to test guide detection using the custom RT primer in our CRISPR Guide Enrichment Kit and then compared to the use of only PolyA priming during reverse transcription. The use of a custom RT primer significantly improves guide detection in single cells, demonstrating higher data quality and lower overall sequencing costs.

	% Reads in Enriched Library Containing a Guide	% Cells with a Guide Assigned
Traditional CROP-Seq PolyA Capture	42%	67%
<b>ScaleBio Custom RT Primer (ScaleBio CRISPR Guide Enrichment Kit)</b>	<b>93%</b>	<b>&gt;90%</b>

When comparing sensitivity using our CRISPR Guide Enrichment Kit versus traditional CROP-Seq polyA detection, a higher percentage of cells are detected with passing guides, particularly as the UMI threshold increases. Additionally, the percentage of guides that meet the UMI threshold increases with the use of the ScaleBio Custom RT Primer.



Product Code	Product Description
955097	ScaleBio™ Cas9 CRISPR Guide Enrichment Kit v1.1
955100	ScaleBio™ CRISPR Guide Enrichment Kit v1.1 (non-Cas9)
945058	ScaleBio™ CRISPR Guide Enrichment Extended Throughput Kit v1.1

Learn more about our Single Cell CRISPR Guide Enrichment Kit at:  
<http://scale.bio/single-cell-crispr-guide-enrichment-kit/>



FOR RESEARCH USE ONLY. NOT FOR USE IN DIAGNOSTIC PROCEDURES.

© 2023 Scale Biosciences  
 Single Cell Crispr Guide Enrichment Kit\_RevC\_10Jan24